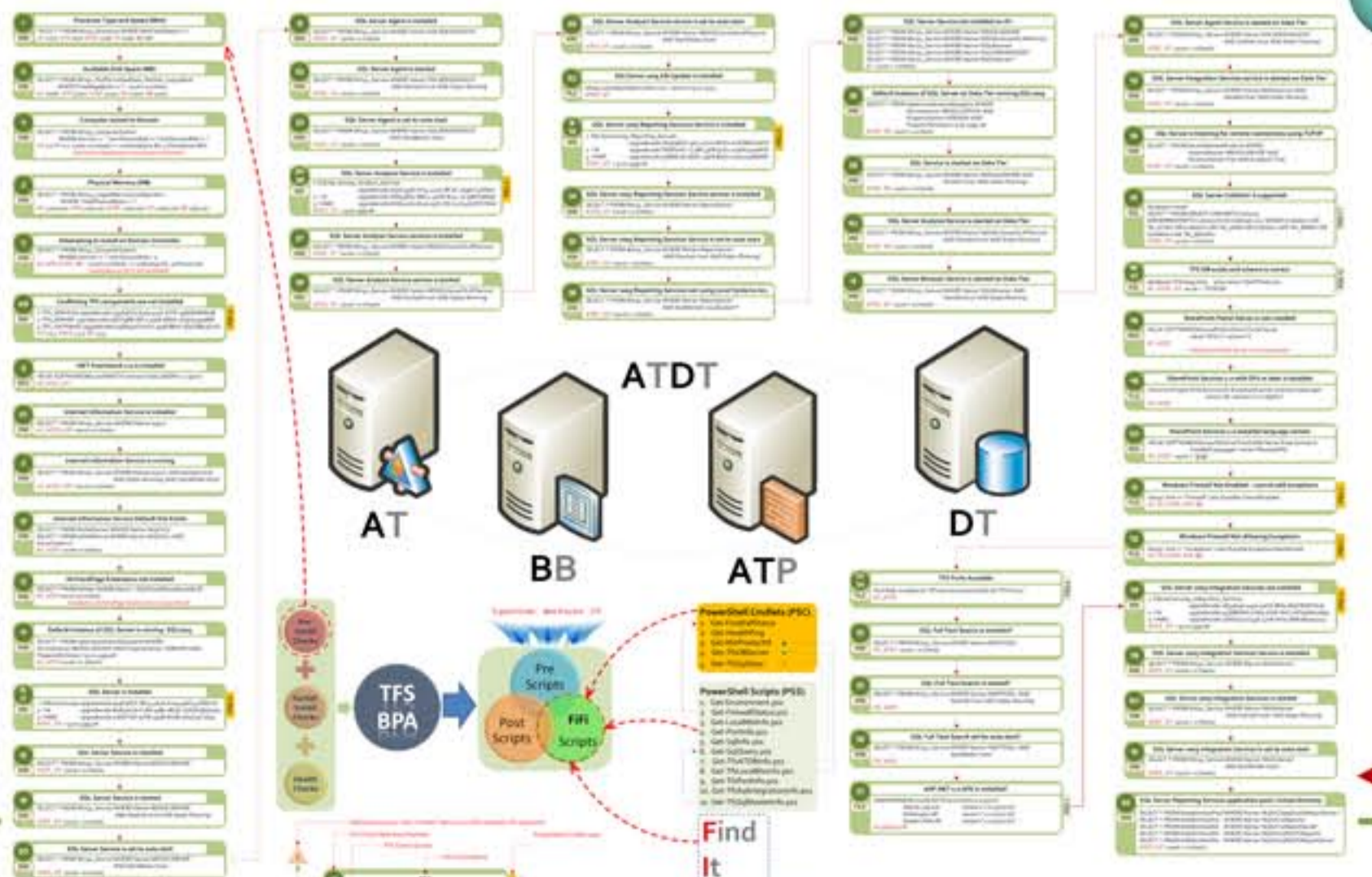
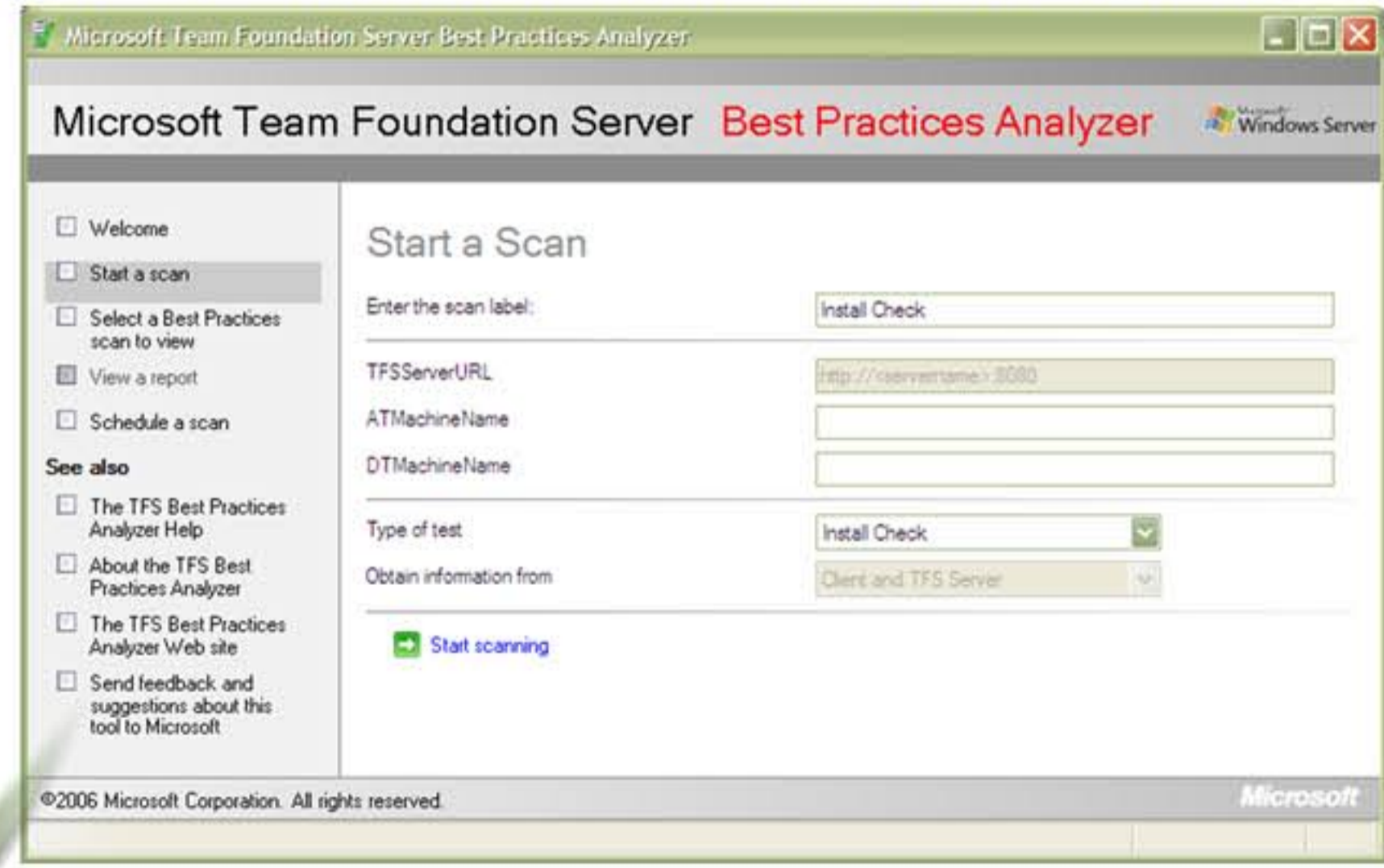
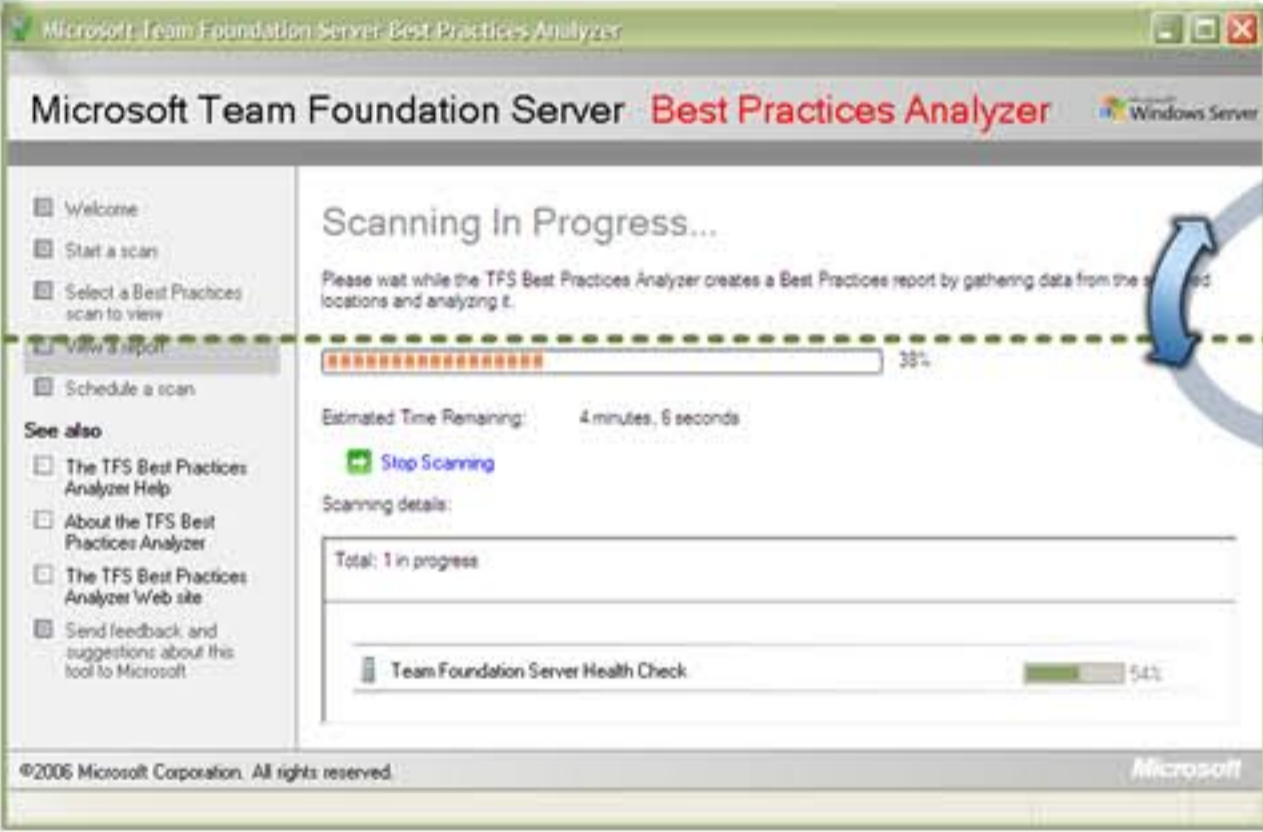
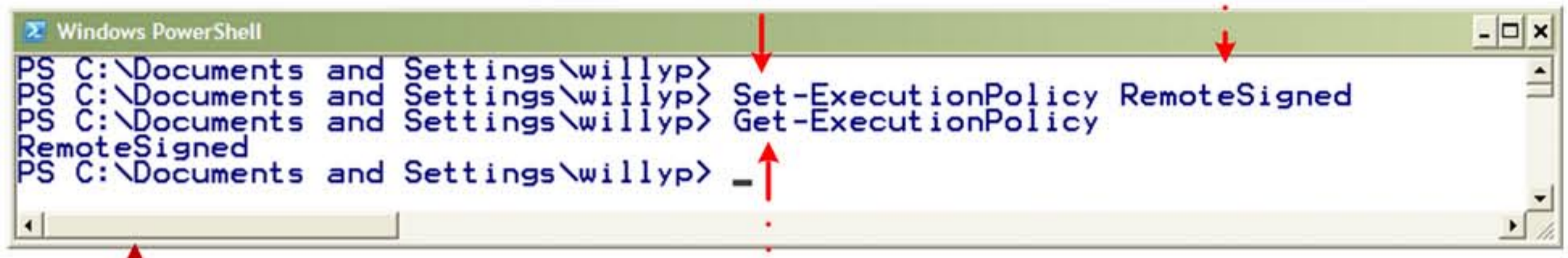
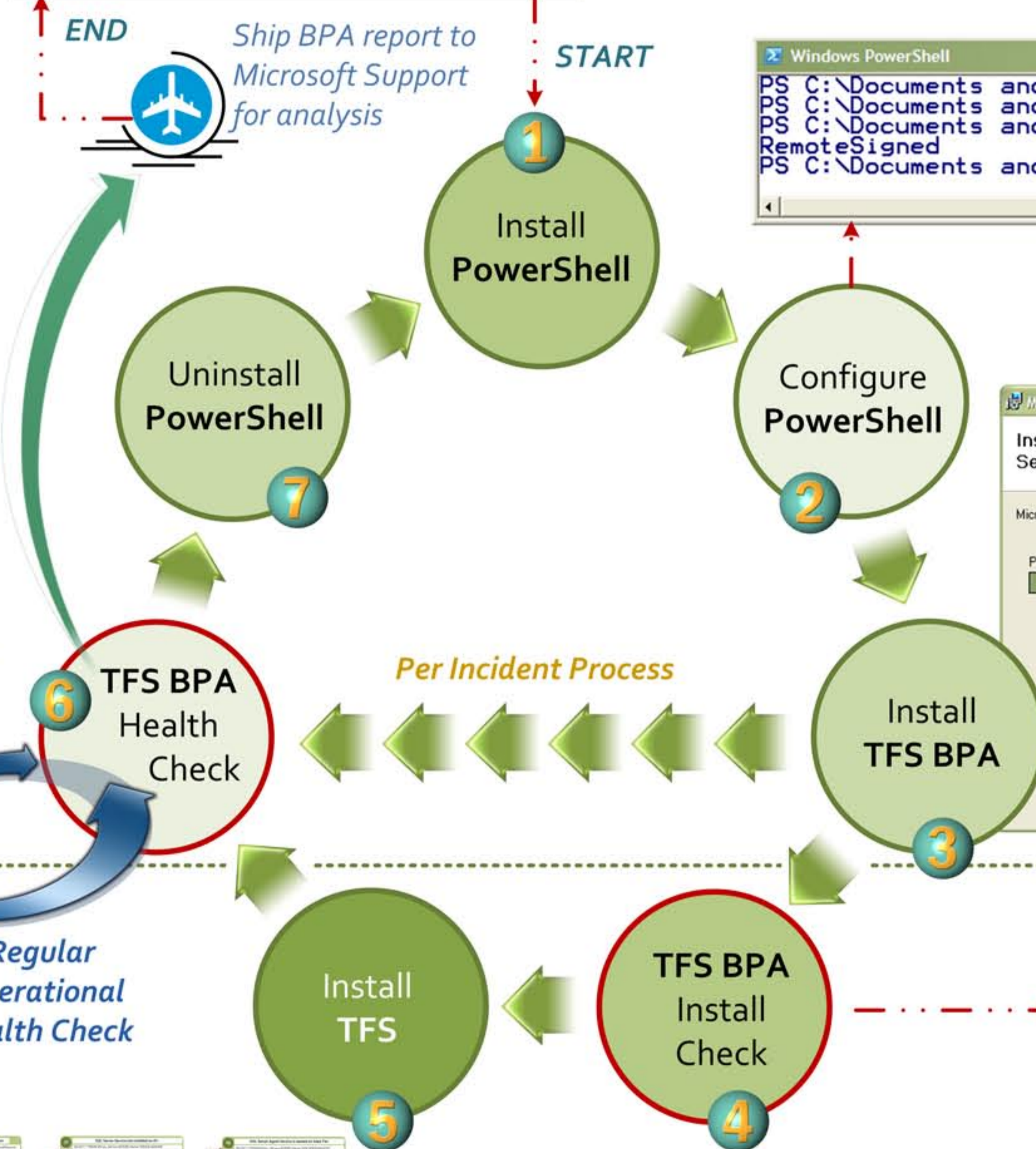


- Steps 1,2,3,6 & 7 are executed as part of a support case, when user selects relevant link in case email.
- Steps 1-6 are executed as part of a normal TFS operational environment.
- Step 6 is iterative and should be executed as part of a regular health check process.
- TFS BPA is a self-updating best practice analyzer tool, running the latest checks and rules.



Refer to quick reference poster  
 0202 Microsoft Team System FiFi Troubleshooting  
 for a FIFI (Find It Fix It) overview

TFS Operational Environment  
 Microsoft Support Incident