

BizTalk Server Software & Editions

Software
Windows 2000/2003
SQL Server 2000
Share Point Services
Needed only for Business Activity

Enterprise Edition
Unlimited trading partners
Multi Processing & Clustering

Standard Edition
5 Internal, 10 external partners

Partner Edition
2 internal, 2 external partners

Developer Edition

Schema

Content
Element
Attribute
Datatypes
Sequences, ...

Document Type
XML
EDIFACT
X12

Types
Normal
Flat File
Delimited
Positional
Properties
Property (filtering on port)
Distinguished (orchestration)

Schema
Import – different namespace
Include – same namespace
Redefine – schema inheritance

Functoids

Basic
Conversion
Cumulative
Database
Date and Time
Logical
Mathematical
Scientific
String

Advanced
Looping
Scripting
Value Mapping

Mapping

Types
Basic
Straight from left to right
Source → Destination
Complex
Looping
Counting
Concatenating

Actions
Translation (formats)
i.e. EDI → XML
New GUID
Transformation (fields)

Orchestration

State
Dehydration
Rehydration

Access
Public
Private
Internal

Call → Synch call
Start → Asynch call
Orchestration Parameters
Correlation Sets
Variable to hold correlation types which are list of params

Transaction

Types
Atomic
Long Running

Scope
Compensation
Only runs for COMMITTED transactions

ACID
Atmoni
Consistent
Isolated
Durable

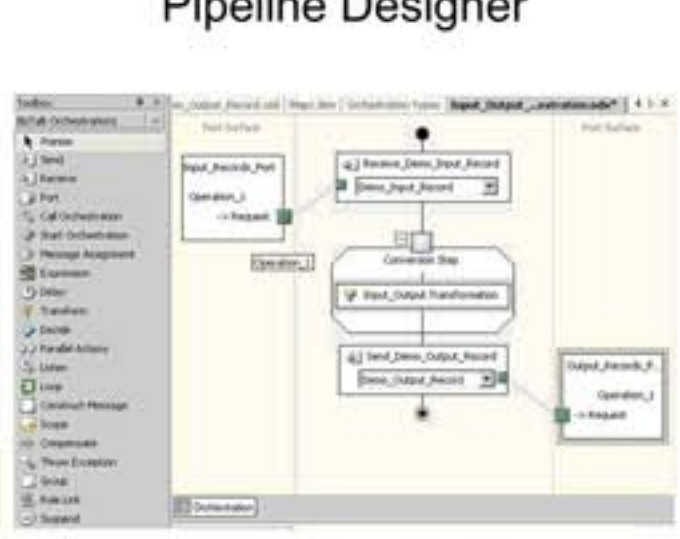
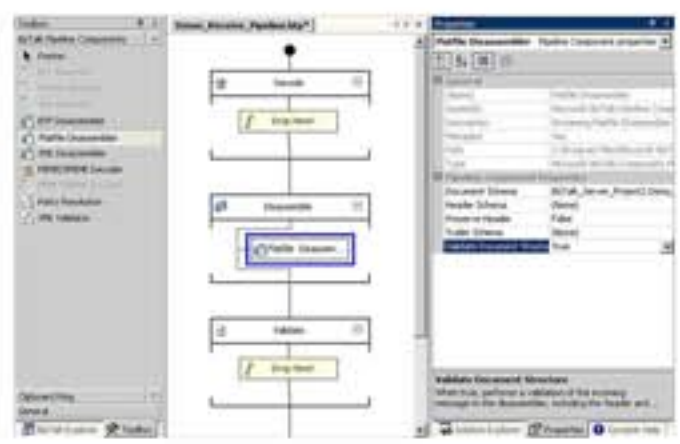
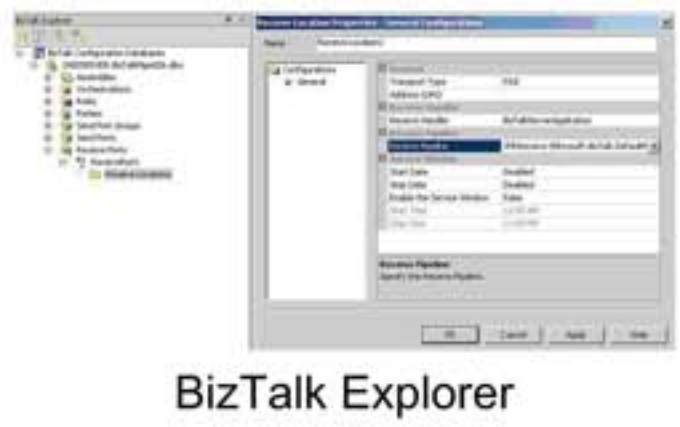
Business Rules

Policy
Collection of one or more rules

Rule
Rule condition
Rule action

Publish
Makes version immutable

Deploy
Makes policy available for use



BizTalk 2004

Adapters
BizTalk Adapter Framework

Information Worker Tools
Business Rules, Composer and Engine
Business Activity Services
Human Workflow Services
Health and Activity Tracking

Developer Tools
BizTalk Editor
BizTalk Explorer
BizTalk Mapper
BizTalk Project System
BizTalk Expression Editor
Orchestration Designer
Pipeline Designer

Technical Tools
BizTalk Migration Wizard
Project template
BizTalk Deployment Wizard
Creation of deployment binding files
BizTalk Server Assemblies
Explorer Extension
Regsvr32 BtsAsmExt.dll

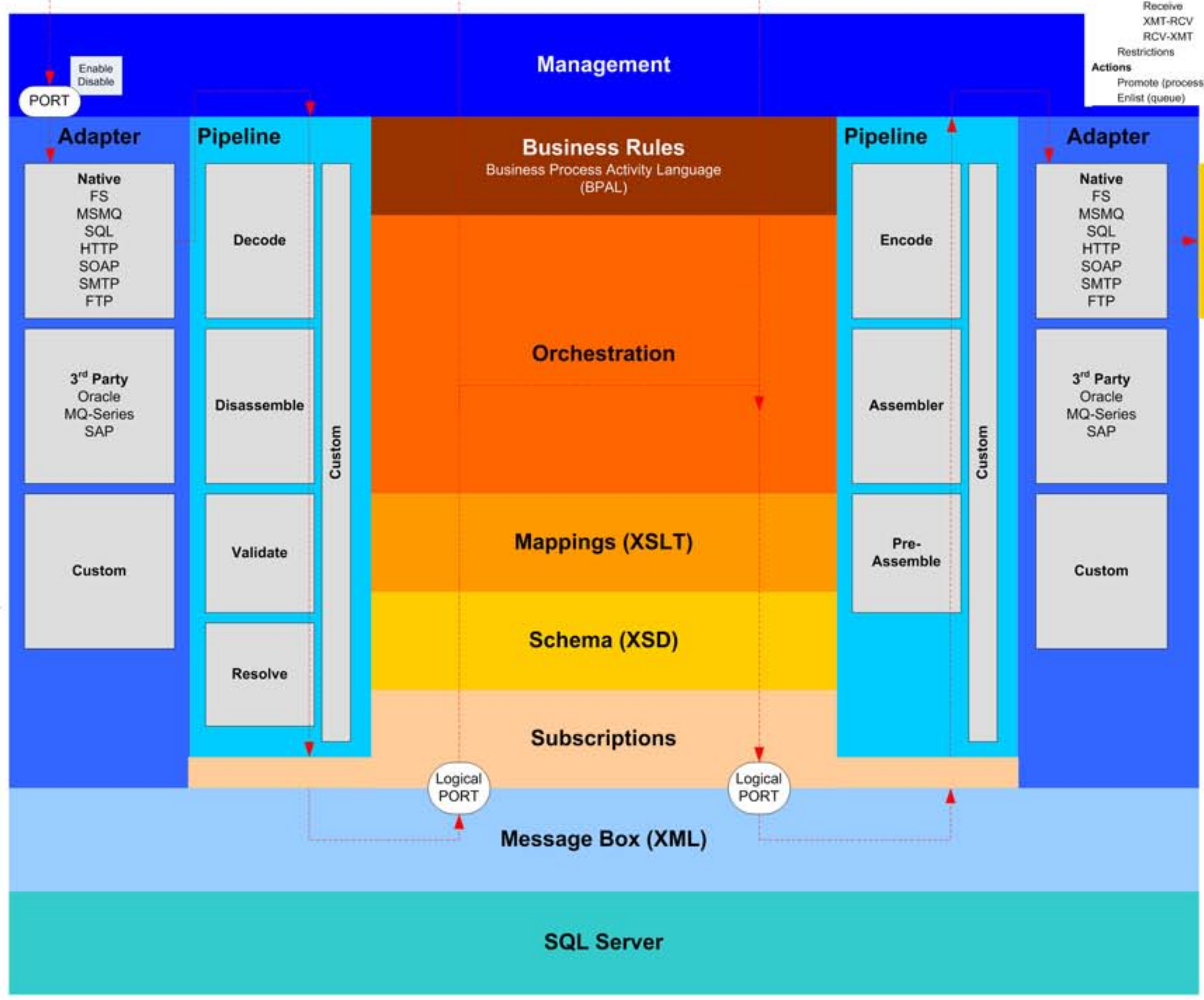
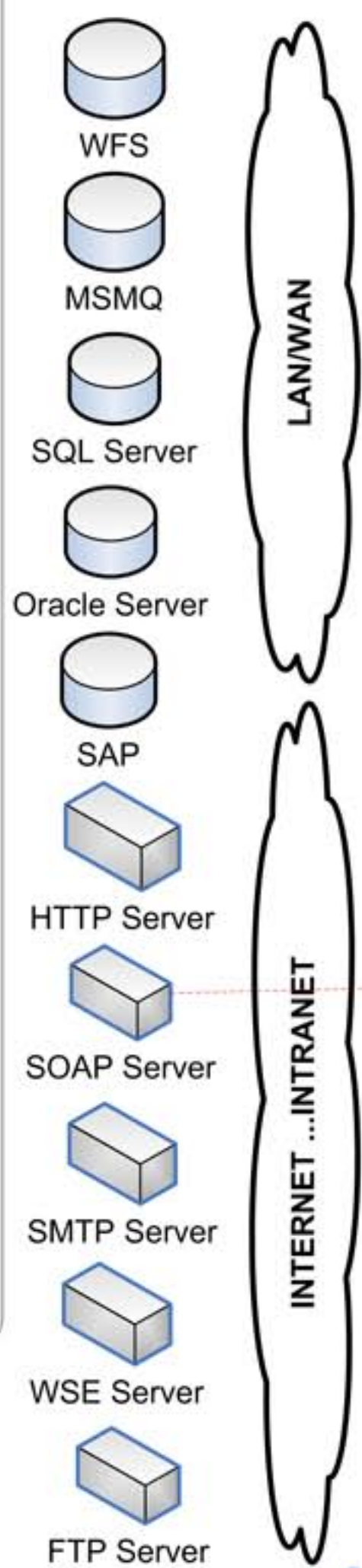
Runtime Engine
Business Rules Engine
Messaging Engine
Orchestration Engine
Tracking Profile Editor

Security
Enterprise Single Signon
Receive Authorization

Web Services Support
Consume web services
Publish back-end schemas directly
Publish orchestration as web services
SOAP header
WSDL – Web Service Description Language
XSD
XSLT

General
Business Activity Monitoring
Online Help
Large Message Capabilities

Visual Studio integration
Schema language (CSD)



BTS Life

- Schema
- Map
- Messaging
 - Ports
 - Adapters
 - Pipelines
- Orchestration
 - Scope
 - Schema
 - Maps
 - Logical Ports
- Build and Deploy
- Enlist Orchestration

Best Practices

General

- Use BizTalk Server SDK for patterns
- Use BizTalk Server Sales CD for licensing info, etc.
- Validate & Test as you go

Schema

- Give meaningful root name
- Version schema
- Distinguish only fields to be used in orchestration

Map

- Use different pages for maps for clarity
- Create separate assembly for "lots" of scripting
- Use real schemas for map

Port

- Specify binding later for easier deployment

Orchestration

- Break Orchestration into meaningful units
- Use Messaging over Orchestration
- Nest orchestrations in long running transactions